

Auto-Tune for Software Manager Version 1.1.0

The Software Manager replaces our PC JAVA based Guitar Manager web site for downloading software to your ATG device (Auto-Tune for Guitar-equipped guitar or the ATG-1 Floor Processor). The Auto-Tune for Guitar Software Manager runs on a Mac (OS 10.9.5 or later) or a PC (Windows Vista or later). Because this utility runs on PCs and Macs, all users will have easy access to updates and purchased software packs.

In order to use the ATG Software Manager you will need an account on the Auto-Tune for Guitar web site and will need to connect your ATG device to a computer that is connected to the Internet.

You can create an the Auto-Tune for Guitar account at

<https://transactions.antarestech.com/atgconnect/CreateAccount.aspx>

After we have established that this software works well on a variety of computers, we will take down the Guitar Manager web site. So it is important for you to try out this application and get back to us with any feedback. Please email feedback to support@autotuneforguitar.com.

Connecting an ATG Device to a Computer

To connect an Auto-Tune for Guitar-equipped guitar to your computer you need the following:



To connect an ATG-1 Floor Processor to your computer you need the following:

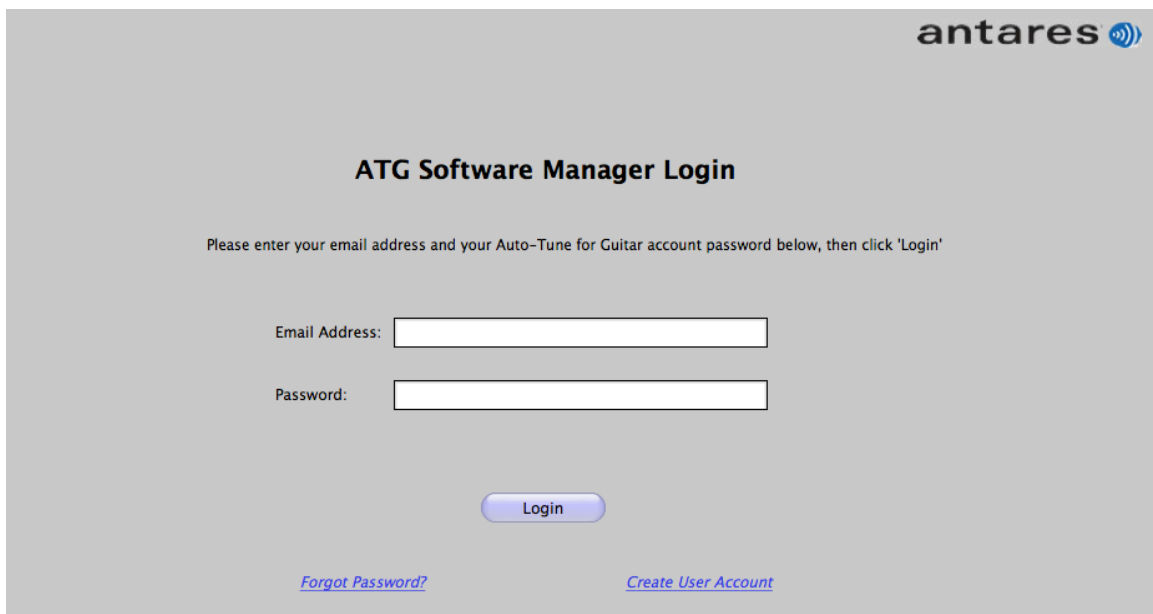
- ATG-1 Floor Processor
- Two standard MIDI 5-pin cables
- MIDI Interface Device
- USB Cable to connect the MIDI Interface Device to your computer

Simply connect your ATG-1 Floor Processor to the MIDI Interface Device using the two standard MIDI cables that plug into the standard MIDI connectors in the back of the unit.

Detailed instructions for connecting your guitar or floor processor can be found at <http://www.AutoTuneforGuitar.com/support/documentation.php>.

Launching the ATG Software Manager

Launch the ATG Software Manager on a computer that is connected to the internet. Login using your Auto-Tune for Guitar account email and password.



antares

ATG Software Manager Login

Please enter your email address and your Auto-Tune for Guitar account password below, then click 'Login'

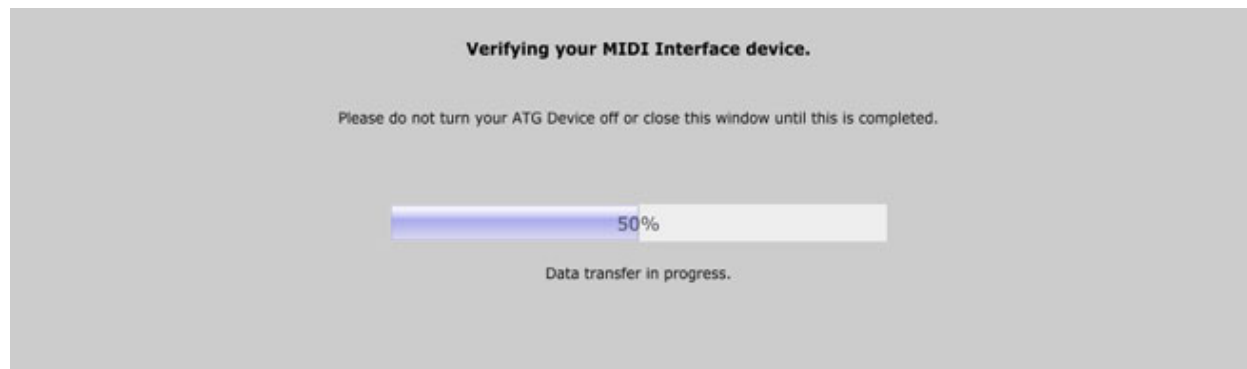
Email Address:

Password:

Login

[Forgot Password?](#) [Create User Account](#)

After logging in, the ATG Software Manager will attempt to establish communication with your ATG device and verify that the connection is good.



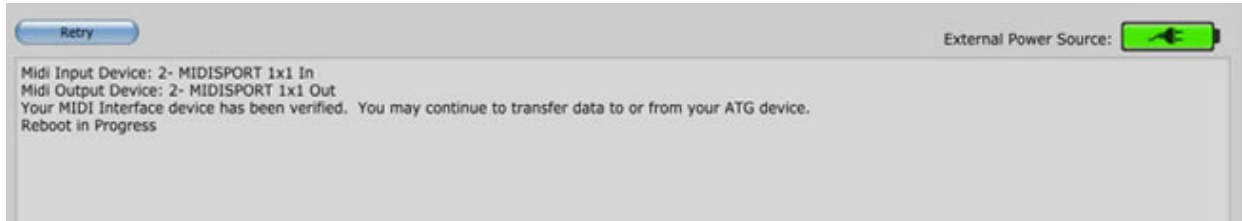
Verifying your MIDI Interface device.

Please do not turn your ATG Device off or close this window until this is completed.

50%

Data transfer in progress.

You can watch its progress then check the results of the connection attempt in the Status message box at the bottom of the page. If all is well, it will recognize your MIDI interface and eventually indicate: "Connected to your ATG device successfully!" Now you may continue to transfer data to or from your ATG device.

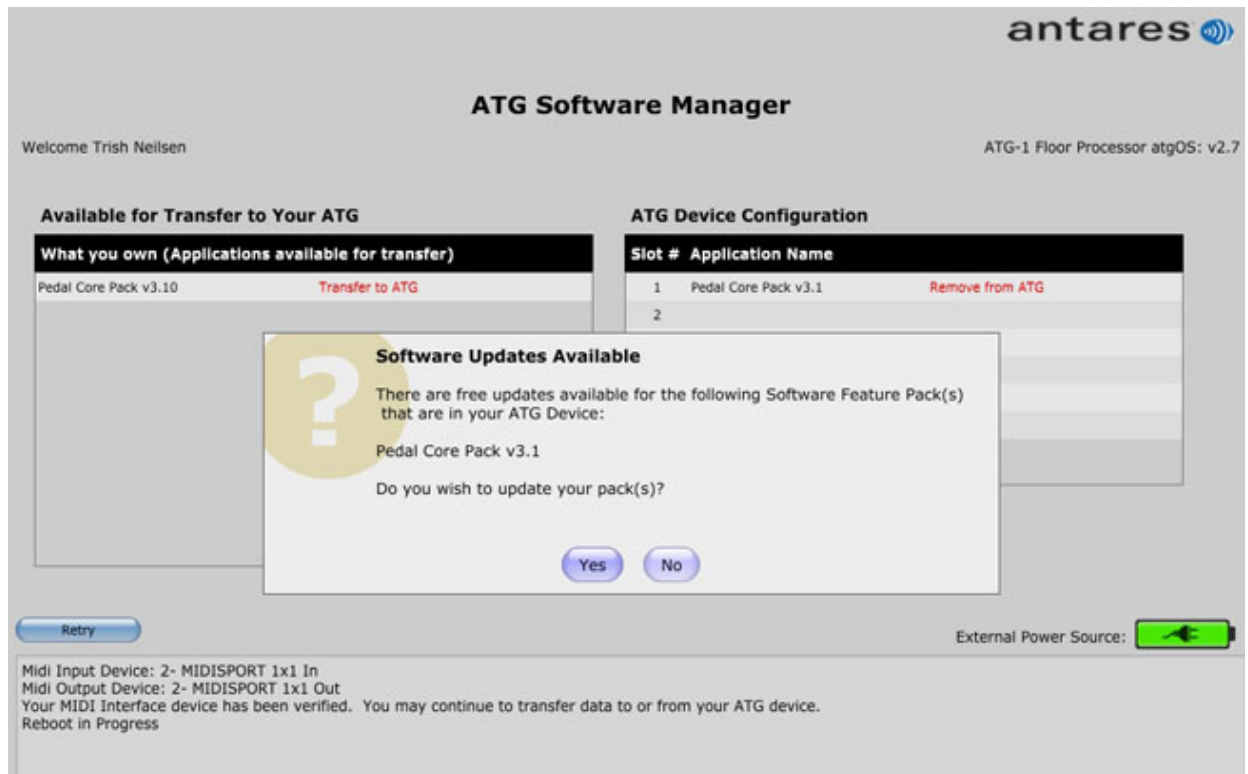


If it instead provides a red error message, correct the indicated error and click the "Retry" button and try to connect again.



After a successful connection is made to your ATG device, the ATG Software Manager checks to make sure your ATG device has the latest version of the ATG operating system (gOS). The gOS will be updated if needed before the ATG Software Manager's control panel is displayed.

The ATG Software Manager also checks to see if there are any free updates to any of the items on your ATG device or in your available for transfer table. If free updates are available, you are given the option of updating the old version to the latest version. If you click the 'Yes' button, the older version of the item is removed from your ATG device or available for transfer table and the latest version of the item is loaded into your ATG device or added to your available for transfer table.




ATG Software Manager Control Panel

The ATG Software Manager's main control panel displays the version of your ATG device's gOS in the upper right side of the control panel along with an indication of the type of ATG device that you are connected to (Guitar or ATG-1 Floor Processor).

All of the software that's currently installed your ATG device is displayed on the ATG Software Manager's right hand pane in the 'ATG Device Configuration' table and all of the software that's available for you to transfer to your ATG device is displayed in the left hand pane in the 'Available for Transfer to Your ATG' table. Items in your Available for Transfer table include the latest version of the basic Peavey AT 200 software or the Pedal Core Pack (if connected to an ATG-1 Floor Processor), free demo trial feature packs, and any software feature pack that you have purchased and have not yet transferred to you ATG device.

The bottom of the control panel contains the 'Retry' button, power level indicator and the Status message window.

antares 

ATG Software Manager

Welcome Trish Neilsen Guitar atgOS: v2.7


Available for Transfer to Your ATG

What you own (Applications available for transfer)		
Peavey AT 200 v2.27	Transfer to ATG	
Trial - Open E v3.0	Transfer to ATG	
Trial - Capo Up v3.0	Transfer to ATG	
Trial - Acoustic Guitar Demo v3.0	Transfer to ATG	
Pro Pack v3.0	Transfer to ATG	Buy Upgrade

ATG Device Configuration

Slot #	Application Name	
1	Peavey AT 200 v2.27	Remove from ATG
2		
3		
4		
5		
6		

[Retry](#)

External Power Source: 


Midi Input Device: 2- MIDISPORT 1x1 In
Midi Output Device: 2- MIDISPORT 1x1 Out
Your MIDI Interface device has been verified. You may continue to transfer data to or from your ATG device.
Reboot in Progress

Transferring software

To transfer a software feature pack from your Available for Transfer table to your ATG device, click the 'Transfer to ATG' link that is next to the application you want to transfer. The transfer progress display is shown while the application is being transferred.

ATG Application Data Transfer

Transferring Pro Pack v3.0 to your ATG Device. Please do not turn your ATG Device off or close this window until this is completed.



11%

Data transfer in progress.

Once the transfer is complete, the ATG control panel is redisplayed and the transferred application is shown in the ATG Device Configuration table, assigned to

the lowest numbered available slot. If the application that was transferred was a purchased software feature pack or upgrade, it is removed from your Available for Transfer table.

Available for Transfer to Your ATG		ATG Device Configuration	
What you own (Applications available for transfer)		Slot # Application Name	
Peavey AT 200 v2.27	Transfer to ATG	1	Peavey AT 200 v2.27 Remove from ATG
Trial - Open E v3.0	Transfer to ATG	2	Pro Pack v3.0 Remove from ATG Upgrade Available
Trial - Capo Up v3.0	Transfer to ATG	3	
Trial - Acoustic Guitar Demo v3.0	Transfer to ATG	4	
		5	
		6	

You can remove an application from your ATG device by clicking the 'Remove from ATG' link that is next to the application you want to remove. If the application that was removed from your ATG device was a purchased software feature pack or upgrade, it is returned to your Available for Transfer table. Note that at least one application must remain in your ATG device. If you attempt to remove the last application on your ATG device you will receive the following error message in the Status window:

Midi Input Device: 2- MIDISPORT 1x1 In
Midi Output Device: 2- MIDISPORT 1x1 Out
Your MIDI Interface device has been verified. You may continue to transfer data to or from your ATG device.
Reboot in Progress
Cannot complete requested software removal
You must leave at least one software pack on your ATG device!

Upgrading Software Feature Packs

Upgrades available for purchase for any of the software feature packs you have purchased is indicated in the both the Available for Transfer table and ATG Device Configuration table.

If the upgradable software feature pack is installed on your ATG device, an 'Upgrade Available' link appears next to its 'Remove from ATG' link in the ATG Device Configuration table. In order to upgrade a software feature pack that is installed in your ATG device, you must first remove it from your ATG device and return it to your Available for Transfer table by clicking its 'Remove from ATG' link. You can then purchase the upgrade by clicking the 'Buy Upgrade' link in your Available for Transfer table. Clicking the link will open your browser to the Auto-Tune for Guitar website's upgrade page displaying the software feature pack upgrades that are available for you to purchase.

After you have completed the purchase of the upgrade, return to the ATG Software Manager and click the 'Refresh' button.

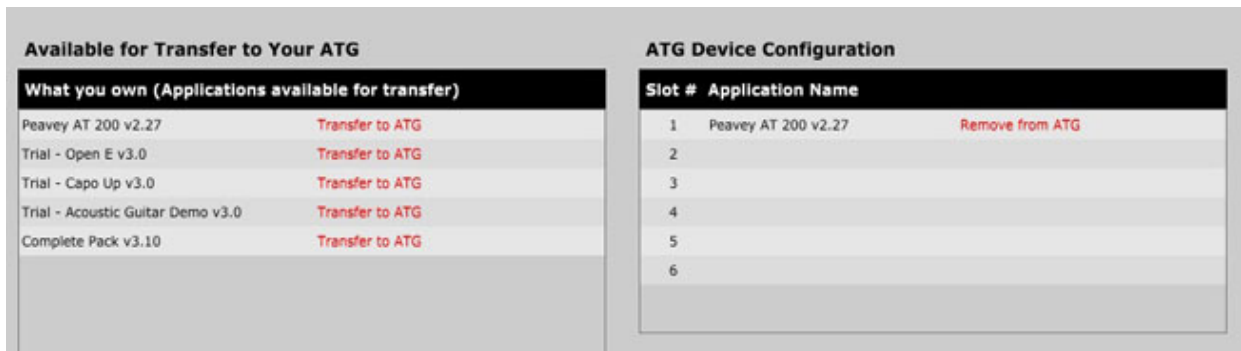


Refresh your Available for Transfer Queue!

Please press the 'Refresh' button to update your Available for Transfer queue.

Refresh

Your upgrade purchase is reflected in your Available for Transfer table.



Available for Transfer to Your ATG

What you own (Applications available for transfer)	
Peavey AT 200 v2.27	Transfer to ATG
Trial - Open E v3.0	Transfer to ATG
Trial - Capo Up v3.0	Transfer to ATG
Trial - Acoustic Guitar Demo v3.0	Transfer to ATG
Complete Pack v3.10	Transfer to ATG

ATG Device Configuration

Slot #	Application Name
1	Peavey AT 200 v2.27 Remove from ATG
2	
3	
4	
5	
6	

For more information on how to manage software on your ATG device see 'Managing Software on your ATG Device' located at <http://www.AutoTuneforGuitar.com/support/documentation.php>.